

*iSpider*X[®]



ROBE[®]



iSpiderX[®]

IP65
INGRESS
PROTECTION

**SUPER-BRIGHT
LED
WASHBEAM**

**INNOVATIVE
FLOWER
EFFECT**

LIGHT OUTPUT
10.500lm
49.000lx @ 5M

**EASYCLEAN[™]
LENS SANDWICH
SYSTEM**

ZOOM
4°–50°

ROBE[®]

ROBE

iSpiderX[®] DMX, DMX IP: 2.245.181.104

NFC

PRESS DISPLAY ON

Navigation buttons: Up, Down, Left, Right arrows.



Introducing the iSpiiderX®, a pinnacle of cutting-edge design, construction, and protection technology. Evolving from the esteemed legacy of its predecessor, the original iSpiider®, this high-performance fixture boasts an IP65 rating, ensuring resilience against any weather conditions.

Tailored for festivals, concerts, outdoor events, and environments prone to inclement weather, the iSpiiderX® combines state-of-the-art construction materials with a minimalist design, weighing a mere 18 kg. It features the leading IP65-rated active RAINS™ protection system for unparalleled durability.

Equipped with 18 × 40-Watt RGBW and 1 × 60-Watt LED multichip sources, the iSpiiderX® maintains the core specifications of the original Spiider®. Its 12.5:1 zoom optical system delivers a versatile range from a tight 4° Beam to a wide 50° Wash, retaining full pixel mapping capability.

The hallmark of the iSpiiderX® is the patented MCFE™ - Multi-Coloured Flower Effect, powered by the centre 60W RGBW LED multichip. This feature produces vivid, rotating multi-coloured spikes of light, enhancing the visual spectacle of any performance.

To facilitate maintenance and ensure a dust-free environment for the optics, the iSpiiderX® introduces the patented EasyClean™ lens sandwich system. This innovative design simplifies lens removal and cleaning, while the non-reflective front lens minimizes distractions.

For seamless programming, the onboard DataSwatch™ colour library offers 66 premixed colours and tones, including whites. Advanced L3™ dimming software ensures imperceptible fades to black, enhancing the overall lighting experience.

Engineered for quiet operation, the iSpiiderX® features advanced cooling systems and super smooth zoom stepper motors. With tungsten lamp emulation and variable CTO from 2.700K to 8.000K, it excels in noise-sensitive environments.

The Cpulse™ - Pulse Width Modulation control system eliminates on-screen camera flicker, making the iSpiiderX® compatible with advanced camera systems. The MAPS™ (Motionless Absolute Positioning System) removes the need for pre-use calibration, reducing audience distraction due to fixture reset during performances.

The onboard RAINS™ (Robe Automatic Ingress Neutralization System) actively monitors humidity, temperature, and pressure, ensuring peak performance by automatically removing moisture detected within the fixture thus protecting the internal micro-climate.

Designed to operate in extreme cold, the iSpiiderX® features POLAR+™ technology, maintaining internal temperature levels down to minus 50 degrees centigrade with minimal power consumption.

The luminaire conducts an on-call self-pressure test in under 3 minutes, ensuring maximum protection by detecting errors in gasket placement and cover tightening.

Utilizing NFC (Near-Field Communication) technology, the Robe Com app provides access to setup, diagnostics, and performance features directly from mobile devices. The REAP™ (Robe Ethernet Access Portal) facilitates remote monitoring of fixture performance over Ethernet Networks.

Supporting all control protocols, including DMX control desks, media servers via sACN, and Kling-Net, the iSpiiderX® delivers dynamic video effects through pixel mapping. CRMX wireless DMX and the Epass™ Ethernet pass-through switch ensures maintained network connectivity.

The iSpiiderX® is part of the iSeries, the new standard in outdoor lighting, combining cutting-edge technology with robust construction and unparalleled performance.

iSeries – Robe reliability in all weathers

Source

- Light source type: 1 × 60W RGBW and 18 × 40W RGBW LED multichips
- LED life expectancy: min. 50,000 hours
- Typical lumen maintenance: L70/B50 @ 50,000 hours

Optical System

- Robe's proprietary optical design
- High-efficiency zoom optical system, ratio 12.5:1
- Zoom range: 4°-50°
- Fixture total lumen output: 13,100 lm (integrating sphere), 10,500 lm (goniophotometer)
- Illuminance: 49,000 lx @ 5 m
- RLCT™ Innovative lens coating technology (Patent pending)
- EasyClean™ - newly designed and patented lens sandwich system for easy cleaning and time saving maintenance of the lenses

Dynamic Effects and Features

- Colour mixing mode RGBW or CMY
- Individual control of each RGBW pixel
- White light: Variable CCT 1.700K-20.000K
- DataSwatch™ filters: pre-programmed 66 colours and tones including most used whites 2.700K, 3.200K, 4.200K, 5.600K and 8.000K
- Tungsten lamp effect: 750W, 1.000W, 1.200W, 2.000W, 2.500W lamp emulation for whites from 2.700K to 4.200K (red shift and thermal delay)
- Colour rainbow effect with variable speed
- MCFE™ - Multi-Coloured Flower Effects – creating spectacular multicolour beam effects in the air rotating in both directions at variable speed (Patented)
- Pre-programmed pixel effects with colour, dimming and strobe chases, waves and pulses at variable speed and direction
- Electronic strobe effect with variable speed up to 20 Hz, pre-programmed random strobe & pulse effects
- High resolution electronic dimming: 0-100%
- L3™ - (Low Light Linearity) Imperceptible 18 bit dimming for ultra smooth fade to black
- Cpulse™ special flicker-free management for HD and UHD cameras, ready for 8K and 16K
- POLAR+™ for power saving and instant operation in extremely cold weather conditions

Control and Programming

- Setting & Addressing: ROBE Navigation System 2 (RNS2)
- Display: QVGA Robe screen with battery backup, gravitation sensor for auto screen positioning, operation memory service log with RTC, built-in analyser for easy fault finding, NFC app controller
- Protocols: USITT DMX-512, RDM, Art-Net, MA Net, MA Net2, sACN, Kling-Net

- Wireless CRMX™ technology from Lumen Radio
- Epass™: Ethernet pass through switch which sustains Ethernet integrity, when the fixture has no power, to automatically maintain network connectivity
- REAP™ - Robe Ethernet Access Portal
- RAINS™ (Robe Automatic Ingress Neutralization System) manages humidity, temperature and pressure control using an active monitoring system to automatically remove any moisture detected within the fixture and provides constant monitoring to ensure peak performance
- DMX Protocol modes: 10
- Control channels: 49, 27, 33, 90, 27, 47, 91, 110, 104, 123
- Pan & Tilt resolution: 16 bit
- R,G,B,W colour mixing: 8 or 16 bit (internal 18 bit)
- Zoom: 8 bit
- Dimmer: 8 or 16 bit (internal 18 bit)

Movement

- Pan movement: 540°
- Tilt movement: 220°
- Movement control: Standard and Speed
- Controllable speed of Pan & Tilt movement
- EMS™: Electronic Motion Stabilizer system for Pan & Tilt reducing beam deviation caused by truss movement or vibration (Patented)
- Automatic Pan & Tilt position correction
- MAPS™ - Motionless absolute positioning system for Pan and Tilt (Patented)

Thermal Specification

- Maximum ambient temperature: 50 °C (122 °F)
- Maximum surface temperature: 80 °C (176 °F)
- Minimum operating temperature: -50 °C (-58 °F)
- Total heat dissipation: max. 1.614 BTU/h (calculated)

Electrical Specification and Connections

- Power supply: Electronic auto-ranging
- Input voltage range: 100-240 V, 50/60 Hz
- Power consumption: max. 660 W
- Power connector in: IP65 Neutrik powerCON TRUE1
- DMX and RDM data in/out: IP65 Locking 5-pin XLR connectors
- Embedded Ethernet switch 10/100 Mbps: 1 × in / 1 × out
- Ethernet port in: 2 × IP65 RJ45 connector

Approvals

- CE Compliant
- cETLus Compliant (pending)

Mechanical Specification

- Height: 460 mm (18.11") – head in vertical position
505 mm (19.88") – head in horizontal position
- Width: 424 mm (16.69")
- Depth: 226 mm (8.89")
- Weight: 18 kg (39.7 lbs)
- Ingress protection rating: IP65

Rigging

- Mounting positions: vertically
- Universal operating position
- Mounting points: 2 pairs of 1/4-turn locking points
- 2× Omega adaptors with 1/4-turn quick locks
- Safety cable attachment point
- Tilt transport lock

Included Items

- User Manual
- Omega Adaptor CL-regular 2 pcs
- Power cord including powerCON TRUE1 In connector:
US:13052277-01
EU:13052276-01

Optional Accessories

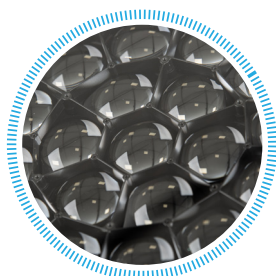
- Doughty Trigger Clamp: 17030386
- Safety wire 36 kg: 99011963
- Single Top Loader Case: 10120352
- Dual Top Loader Case: 10120353
- Quad Top Loader Case: 10120354
- Foam Shell: 20020494

Legal

- iSpiderX® is Registered Trademark of Robe lighting s. r. o.
- iSpiderX® is patented by Robe lighting s. r. o. and is protected by one or more pending or issued patents

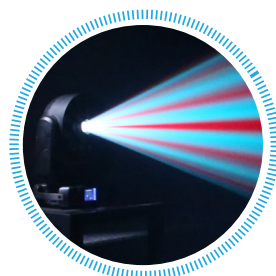
Optical System

Robe R&D has designed a new very efficient 12.5:1 zoom optical system with a range from 4°–50°, resulting in light output of 10.500 lumens and intensity of 49.000 lux @ 5 m (Patented).



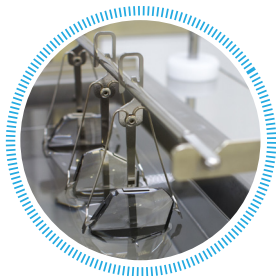
Innovative Flower Effect

The new innovative Multi-Coloured Flower Effect creates sharp, colourful spikes of light, rotating in both directions at variable speed, adding a new, spectacular visual effect to the show (Patented).



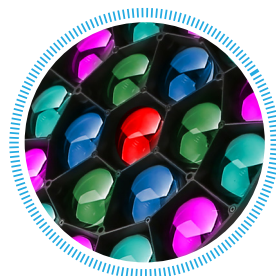
Lens Coating Technology

The innovative lens coating technology protects soft plastic lenses against „surface scattering“ even when scrubbed repeatedly. Anti-static properties prolong the time before the lenses collect dust and create white maps on the surface. The new coating brings countless benefits including longer intervals between cleaning, bright and clear lenses, no scratches or marks, and higher light output (Patent pending).



Pixel Control

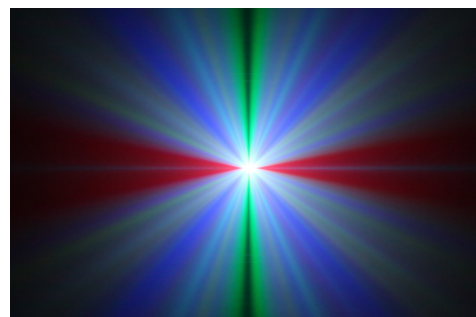
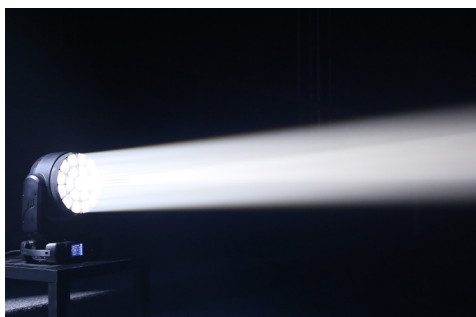
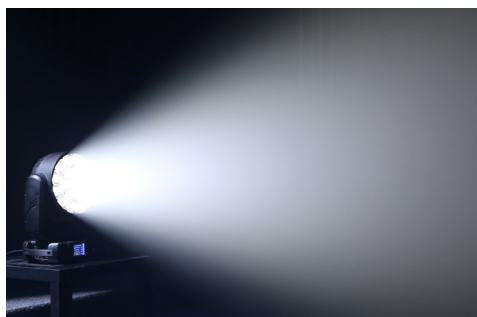
Individual pixel control of each LED, via DMX or Kling-Net protocols turn the fixture either into the low res screen or allows the creation of stunning in-air beam effects.



Max. Zoom

Min. Zoom

Flower Effect



iSpiderX[®]

True White Colours

Precise colour-mixing of specially calibrated LEDs together with predefined values on a Virtual Colour wheel channel allow quick direct calling of exact white hues of 2.700K, 3.200K, 4.200K, 5.600K and 8.000K.



8.000 K



5.600 K



4.200 K



3.200 K



2.700 K

Tungsten Effect

The halogen lamp mode provides emulation of 750W, 1.000W, 1.200W, 2.000W and 2.500W. The dimmer channel initiates halogen lamp-like behavior (red effect and thermal delay) for each lamp type during dimming.



Dimmer 100%



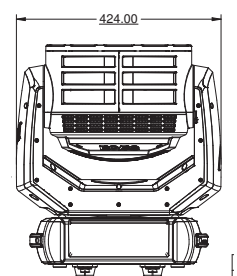
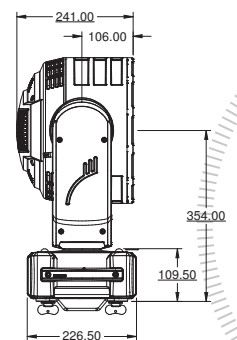
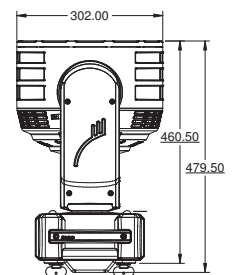
Dimmer 80%



Dimmer 50%



Dimmer 20%



iSpider[®]X



ROBIN[®]
Innovative Technology

www.robe.cz

ROBE[®]

Head office: ROBE lighting s. r. o. | Hážovice 2090 | 756 61 Rožnov pod Radhoštěm | Czech Republic

Factory: ROBE lighting s. r. o. | Palackého 416 | 757 01 Valašské Meziříčí | Czech Republic

Tel.: +420 571 751 500 | E-mail: robe@robe.cz